



MONTHLY MEMBERSHIP PROGRESS REPORT

District 3231A1

Results as of: 06/30/2018

GMT: JAYESH THAKKAR

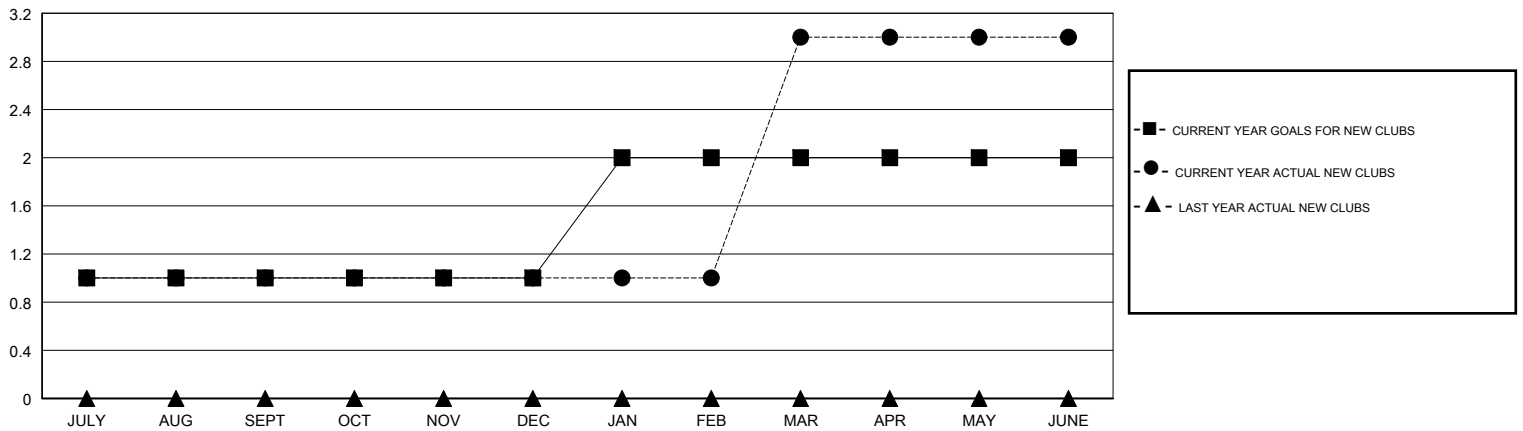
LOCATION INDIA

GMT CA

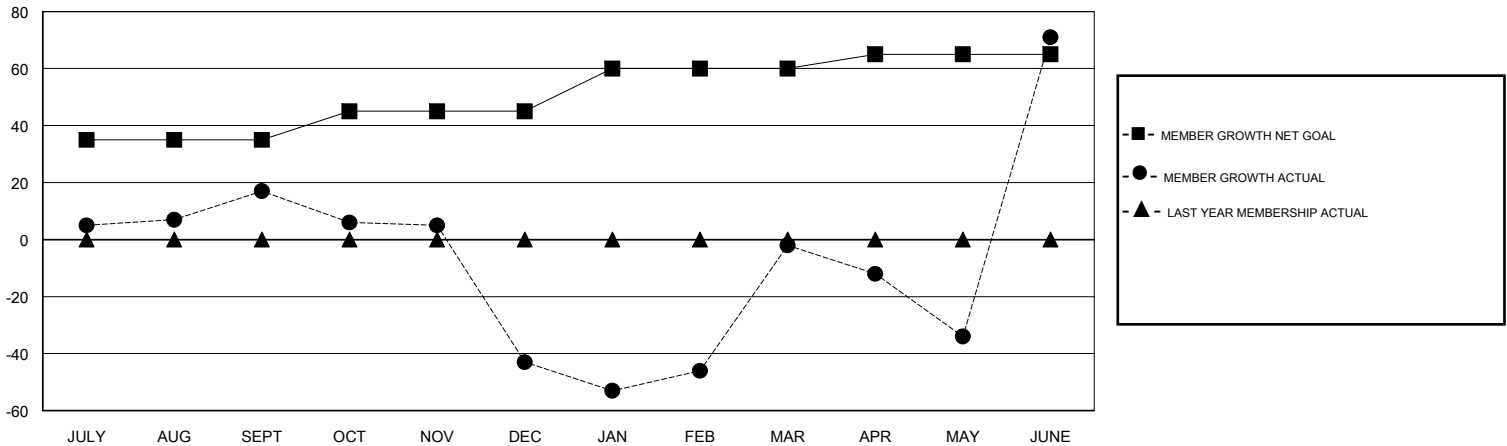
Clubs			
RESULTS FOR 2017-2018			
QUARTER	NEW CLUB GOAL	NEW CLUBS	DROPPED CLUBS
JULY/AUG/SEPT	1	1	1
OCT/NOV/DEC	0	0	2
JAN/FEB/MAR	1	2	1
APR/MAY/JUNE	0	0	0

Members			
RESULTS FOR 2017-2018			
QUARTER	MEMBER GROWTH NET GOAL	MEMBER GROWTH ACTUAL	DROPPED MEMBERS ACTUAL (including transfers)
JULY/AUG/SEPT	35	58	39
OCT/NOV/DEC	10	6	66
JAN/FEB/MAR	15	86	24
APR/MAY/JUNE	5	221	134

GOALS AND ACTUAL NEW CLUBS CUMULATIVE



GOALS AND ACTUAL MEMBERS CUMULATIVE



DROPPED CLUBS: 4	38 CLUBS OF 57 ADDED 1 OR MORE NEW MEMBERS	<u>GENDER DISTRIBUTION</u>	
DROPPED MEMBERS		MALE	1,176 (61.64%)
DECEASED	23	FEMALE	732 (38.36%)
CLUB CANCELLED	27	Women Percentage Fiscal Year Goal: 45%	
OTHER	213	TOTAL FAMILY UNIT MEMBERS	0
TOTAL	263	FAMILY MEMBERS PAYING HALF DUES	0

[CLICK HERE FOR CUMULATIVE MEMBERSHIP DATA](#)